

About us

Dental Services



Adults receiving dental services.

2643

Children receiving dental services.

4373

150 driver volunteers

13,034 client trips

I ♥ ndis

Accredited: NDIS

12,911 Hydrotherapy clients

NSQHS STANDARDS Accredited: NSQHS

85,000 Total number of incoming calls for the past year.

Our team

5 in 1975 We opened with 5 staff in 1975

150 in 2019 Staff in 2019

170 Volunteers Volunteers in 2019

WE OPERATE FROM 13 SITES

11,500 clients seen

Gambler's Help Southern assisted 1210 clients

6 full Melbourne Metro train carriages

6.25 times around Australia

More than 100,000 kms travelled last year by our staff across our region to deliver vital services.

1,100,000 KM

In the past decade we have travelled 1.1 million km. Almost 3 times the distance from Earth to the Moon.

Strategic plan 2016 -2019

Our vision of healthy people, healthy communities will be realised with the understanding and participation of the community we serve.

Purpose

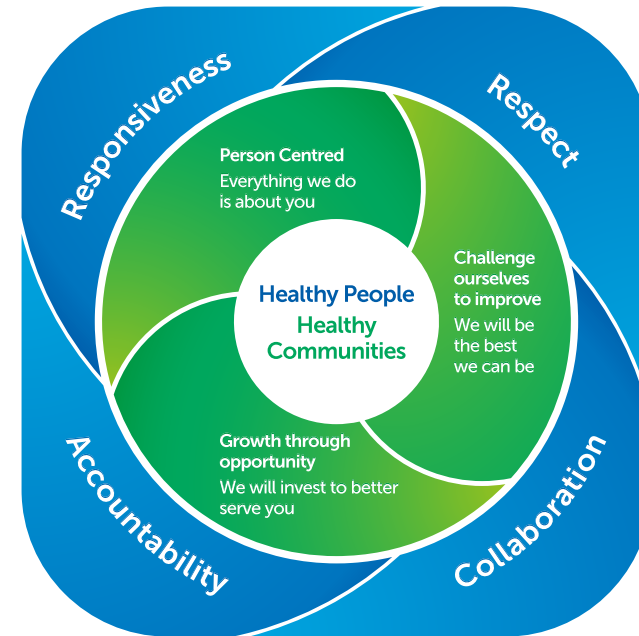
Understand and meet the health and well-being needs of our diverse community as a socially responsible business.

Sustainable Organisation

Equitable Access

Better Health Outcomes

Better Experiences



Strategic Goals



Annual Report
2018-19

Connecting with our community

We are pleased to present our Annual Report for 2018-19.

This document provides a financial and strategic overview of our business over the past year as we worked towards our vision of healthy people, healthy communities.

A full copy of our Audited Financial Statements is available on our website www.connecthealth.org.au, www.acnc.gov.au or call us on (03) 9575 5333 for a copy. It can be read in conjunction with the print extract or online version of our Annual Quality Account 2018-19 which is also available on our website at www.connecthealth.org.au.

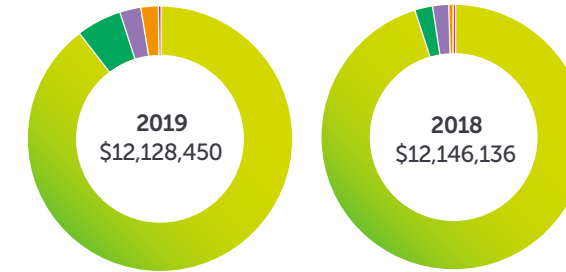
We thank our supporters, our staff and volunteers for their commitment and the value they bring to our work.

Amanda Murphy
Chief Executive Officer

Lars Schiphorst
Chair, Board of Directors

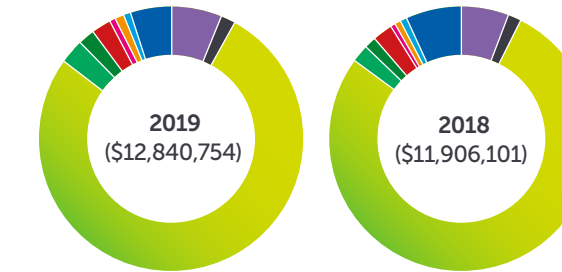
Financial report

Revenue and other income



- Grant funding \$11,477,959 (2019) / \$11,574,660 (2018)
- Patient fees \$337,706 (2019) / \$244,540 (2018)
- Interest income \$198,636 (2019) / \$234,146 (2018)
- Other revenue \$109,106 (2019) / \$71,406 (2018)
- Profit on sale of non-current assets \$5,043 (2019) / \$21,384 (2018)

Expenses



- Materials and consumables used (\$758,295) (2019) / (\$687,829) (2018)
- Depreciation and amortisation (\$280,311) (2019) / (\$190,359) (2018)
- Employee benefits (\$10,033,717) (2019) / (\$9,250,434) (2018)
- Occupancy (\$301,083) (2019) / (\$254,902) (2018)
- Repairs and maintenance (\$170,545) (2019) / (\$173,693) (2018)
- Computer and network (\$149,215) (2019) / (\$288,226) (2018)
- Printing and stationery (\$59,532) (2019) / (\$69,817) (2018)
- Motor vehicle (\$84,377) (2019) / (\$84,512) (2018)
- Memberships and subscriptions (\$35,074) (2019) / (\$40,655) (2018)
- Other expenses (\$968,605) (2019) / (\$865,674) (2018)

Balance Sheet

Assets	2019	2018
Current assets	\$7,668,562	\$8,955,947
Non-current assets	\$1,192,638	\$864,130
Total assets	\$8,861,200	\$9,820,077

Liabilities	2019	2018
Current liabilities	\$5,080,119	\$5,269,253
Non-current liabilities	\$145,729	\$209,985
Total liabilities	\$5,225,848	\$5,479,238

Total equity:
\$3,635,352 (2019) / \$4,340,839 (2018)

This is an extract of our Audited Financial Statements. A full copy is available on our website www.connecthealth.org.au www.acnc.gov.au or call us on (03) 9575 5333 for a copy.

Our services

- Cardiac rehabilitation
- Community nursing
- Community transport
- Counselling
- Dental services
- Diet and nutrition
- Exercise groups
- Gambler's Help
- Hydrotherapy
- NDIS
- Occupational therapy
- Physiotherapy
- Safe driving program
- Social support groups
- Speech pathology
- Supported playgroups
- Paediatric services
- Podiatry
- Youth support services

Board of Directors



Amanda Murphy - CEO



Lars Schiphorst - Chair person



James Arbuckle



Andrew Batty



Sally Bassor



Thomas King



Micaela Drieborg



Richard Mullaly



Samantha Kolasa



Graham Ludecke & Sally Howe



Marguerite Abbott